



2025 open enrollment

Your guide to your health plan and benefits

Synchrony HR

January 1, 2025

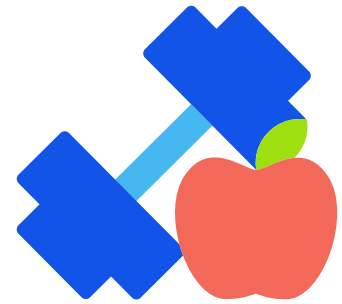


Welcome to Anthem

We're here to help you choose your health plan with confidence

Choosing a health plan is one of the most important decisions you'll make this year. We're here to help you make the best choice so you and your family feel confident and cared for every step of the way. Open enrollment is your time to explore benefits, programs, and resources that can support your whole health and well-being all year long.

This guide will help you understand everything that's available to you, from benefits to wellness programs. You'll also find tips and tools that can help you reach your health and wellness goals once you've enrolled in an Anthem health plan.



Why Anthem

At Anthem, we're dedicated to improving your health and providing quality coverage to the 47 million people who have an Anthem health plan.¹ To make sure you're receiving safe, quality care and service, we review the benefits and programs you use to know what's working — and learn where we can take action — to help you be your healthiest self. With an Anthem plan, you'll have access to a variety of benefits, including:

The nation's largest network

Anthem gives you access to more than 1.7 million doctors and hospitals — the nation's largest network of care providers, which touches every ZIP code in the U.S.²

No- or low-cost preventive care

Your plan covers preventive care at little or no added cost when you see a doctor in your plan's network. Preventive care, such as your annual physical, vaccinations, and screenings, can help you stay healthy and catch issues early when they're easier to treat.

Convenient virtual care

Virtual care allows you to connect directly to care from anywhere with a smartphone, tablet, or computer with a camera. You'll be able to meet with a board-certified doctor through video or chat with little to no wait time.³⁻⁵

Health and wellness programs

Your Anthem benefits offer access to a variety of programs, digital tools, and health guides at no added cost to help you with your individual health needs and goals.

¹ Elevance Health website: *Advancing Health Together* (May 2023): advancinghealth.elevancehealth.com.

² Blue Cross Blue Shield Association: *About Us: The Blue Cross Blue Shield System*: [bcbs.com](https://www.bcbs.com).

³ Virtual text and video visits powered by K Health. LiveHealth Online is the trade name of Carelon Health Solutions, Inc., a separate company, providing telehealth services on behalf of your health plan.

⁴ In addition to using a telehealth service, you can receive in-person or virtual care from your own doctor or another healthcare provider in your plan's network. If you receive care from a doctor or healthcare provider not in your plan's network, your share of the costs may be higher. You may also receive a bill for any charges not covered by your health plan.

⁵ LiveHealth Online, internal data (2023).



Table of contents

Medical plans.....	4
Pharmacy benefits.....	5
Plan extras	7
Flyers and resources.....	9
Protecting your privacy	25
Find help in your language.....	26
Notes	27



Medical plans

Review your options to find the right fit for your needs

You deserve peace of mind when it comes to your healthcare. An Anthem health plan gives you that and more, supporting you every step of the way with coverage that fits your needs and your budget.

Review the health plans before making your selection. You'll want to check to see if your doctors are in the plan's network, which will help you make the most of your benefits and save money.

PPO

With a preferred provider organization (PPO) plan, you can go to almost any doctor or hospital — giving you more choices and flexibility.

- Choose a primary care doctor in the plan's network for preventive care, such as checkups and screenings.
- No referral is needed from your primary care doctor to see a specialist, such as an orthopedic doctor or a cardiologist — saving you time and money.
- You'll pay less if you choose doctors and facilities in your plan's network.

HSA

A high-deductible Health Savings Account (HSA) plan allows you to set aside pretax dollars to pay for care tax free. Use the money in the account to pay for qualified medical expenses, such as doctor or hospital visits, prescription drugs, or copays.¹

- The money in your HSA rolls over from year to year and is yours to keep, even if you change health plans or jobs, or retire.
- You can contribute up to \$4,300 for an individual and \$8,550 for a family. If you're 55 or older, you can contribute an extra \$1,000 a year.

Healthcare terms

Deductible: A set amount of money you must pay for covered healthcare services before your health plan shares the costs. An example deductible is \$1,250.

Coinsurance: Your share of the costs for covered healthcare services after you've met your deductible. For example, if you have 30% coinsurance, your plan covers 70% of the cost.

Copay: A set fee that you pay at a doctor's visit or when picking up a prescription.²

Primary care doctor: A doctor you see regularly for checkups and minor illnesses and injuries. Learn more healthcare terms online at [anthem.com/glossary](https://www.anthem.com/glossary).

Find care



Use our **Find Care** tool to see if your doctors are in the plan's network by visiting [anthem.com/find-care](https://www.anthem.com/find-care)

¹ For a full list of qualified expenses, go to [anthem.com/qme](https://www.anthem.com/qme).

² There are plans that require you to pay a copay at the time of service.



Pharmacy benefits

Reliable prescription drug coverage

Having the right medicine at the right time can make a big difference in your health and well-being. We're here to help you access the medications you need, when you need them, while also saving money.

Your plan covers:

- Brand-name and generic drugs on your drug list.
- Certain preventive drugs at a more affordable or no extra cost to you.
- Most specialty drugs required to treat an ongoing health matter or serious illness.

Coverage requirements

Certain medications require you to take other steps before your plan covers them.

- **Preapproval, also known as prior authorization:** This means Anthem needs to approve a drug before the pharmacy fills it.

- **Step therapy:** You may need to try other medicine before we can cover the one your doctor prescribed.
- **Quantity limits:** To help protect your health, your plan may limit how much medication you can receive each month.
- **Dose optimization:** If a higher strength is available, you may be able to switch from taking multiple doses to a single dose each day.

To understand pharmacy benefits:

- Review your medication list to see if your prescriptions are covered.

Tips: How to get your prescriptions and save money

- **Retail pharmacies:** Your costs may be lower with pharmacies in your plan's network.
- Price a medication tool on [anthem.com](https://www.anthem.com) or the **SydneySM Health** app.
- **Noncovered medicine:** If your prescription isn't covered by your plan, you may be able to receive a discount. Share your ID card at the pharmacy, and the available discount will automatically be applied.
- Check for generic instead of brand name medicines, which are just as effective and can save you money.

- Price a medication to find the best price in your plan's network, which can save you more when buying certain medicines.
- Check to make sure your local retail pharmacy is in your plan's network.
- Get more information on our specialty pharmacy once you have a health plan. Most specialty drugs are covered if you need them.

Your pharmacy options

You have choices for filling your prescriptions, including local retail pharmacies in your plan's network . If you use a specialty medicine, it will need to be filled through our specialty pharmacy.

The **Base Network** is our national pharmacy network with nearly 70,000 retail pharmacies across the country.

To find a pharmacy, visit

[anthem.com/pharmacyinformation/rxnetworks.html](https://www.anthem.com/pharmacyinformation/rxnetworks.html)

and choose the Base Network list.

Plan extras

Extra benefits that support your whole health

Once you enroll in your Anthem health plan, you'll have access to a variety programs and resources — at no added cost. These programs will help you to improve your overall health, save on the cost of care, and better manage a health condition if you have one.

Maternity

Our maternity programs help support you no matter where you're at in your parenting journey. From planning a family to raising small children, there's resources available to help you thrive.

Building Healthy Families

Offering 24/7 digital support, Building Healthy Families is here to help your family with everything from preconception and pregnancy to childbirth and early childhood. The program features an extensive content library to support diverse families, including single parents and same-sex and multicultural couples. You'll have access to a library and other tools, such as fertility, diaper change and feeding trackers, due date calculators, and blood pressure monitoring.

Behavioral health

When life gets tough, it can be hard to remember you're not alone. Your Anthem health benefits include a variety of support for your mental health and emotional wellbeing, which can help you take better care of all the other things that matter in your life.

Behavioral Health

Extra support can make a difference with things like depression, anxiety, substance use, or eating disorders. Our caring professionals will work with you to arrange counseling and support services that meet your individual and family needs.



Whole health connections

Staying on top of your health is important but can sometimes be hard to do on your own. We connect you to the right resources that can help you more easily meet your goals.

SpecialOffers

SpecialOffers features discounts on a variety of programs that help promote better health and well-being. Discounts are available on products and services for dental, vision, hearing, weight loss, fitness, family planning, pet insurance, health supplements, and skincare.

Use your preventive care benefits

Stay healthy and catch problems early for easier treatment



Our health plans offer all the preventive care services and immunizations below at no cost to you.¹ As long as you use a doctor, pharmacy, or lab in your plan's network, you won't have to pay anything. If you go to doctors or facilities that are not in your plan, you may have to pay out of pocket.

If you are not sure which exams, tests, or shots are right for you, talk to your doctor.

Preventive care vs. diagnostic care: Knowing the difference

Preventive care helps protect you from getting sick. If your doctor recommends services when you have no symptoms, that's preventive care. **Diagnostic care** is when you have symptoms, and your doctor recommends services to determine what's causing those symptoms.

Adult preventive care

General preventive physical exams, screenings, and tests (all adults):

- Alcohol and drug misuse: related screening and behavioral counseling
- Anxiety, depression, and suicide risk screenings
- Aortic aneurysm screening (for men who have smoked)
- Behavioral counseling to promote a healthy diet and physical activity
- High blood pressure (hypertension) screening
- Bone density test to screen for osteoporosis
- Cholesterol and lipid (fat) levels screening
- Colorectal cancer screenings, including fecal occult blood test, barium enema, flexible sigmoidoscopy (exam of the large intestine), screening colonoscopy and related prep kit, and computed tomography (CT) colonography (as appropriate)²
- Diabetes screening (type 2)³
- Exercise interventions to prevent falls in adults over age 65

- Hepatitis B virus (HBV) screening for people at increased risk of infection
- Hepatitis C virus (HCV) screening
- Hearing screening
- Height, weight, and body mass index (BMI) measurements
- Human immunodeficiency virus (HIV): screening and counseling
- Interpersonal and domestic violence: screening and counseling
- Lung cancer screening for adults aged 50 to 80 years who have a 20 pack-year smoking history and currently smoke or have quit within the past 15 years²
- Obesity: related screening and counseling³
- Prostate cancer screenings, including digital rectal exam and prostate-specific antigen (PSA) test
- Sexually transmitted infections: related screening and counseling
- Syphilis infection screening for persons who are at increased risk
- Tobacco use: related screening and behavioral counseling
- Tuberculosis screening

Women's preventive care:

- Breast cancer screenings, including exam, mammogram, and genetic testing for BRCA1 and BRCA2 when certain criteria are met⁵
- Breastfeeding: primary care intervention to promote breastfeeding support, supplies, and counseling^{6,7,8/9}
- Chlamydia and gonorrhea screening
- Contraceptive (birth control) counseling
- Counseling related to chemoprevention for those at high risk for breast cancer
- Counseling related to genetic testing for those with a family history of ovarian or breast cancer
- Food and Drug Administration (FDA)-approved contraceptive medical services, including sterilization, provided by a doctor
- Human papillomavirus (HPV) screening⁷
- Pelvic exam and Pap test, including screening for cervical cancer
- Pregnancy screenings, including gestational diabetes, hepatitis B, asymptomatic bacteriuria, Rh incompatibility, HIV, healthy weight, preeclampsia, and depression⁷
- Urinary incontinence screening
- Well-woman visits

Immunizations:

- Diphtheria, tetanus, and pertussis (whooping cough)
- Hepatitis A and hepatitis B
- Human papillomavirus (HPV)
- Influenza (flu)
- Measles, mumps, and rubella (MMR)
- Meningococcal (meningitis)
- Monkeypox and/or smallpox (at risk)
- Pneumococcal (pneumonia)
- Respiratory syncytial virus (RSV)
- Severe acute respiratory syndrome coronavirus 2 (SARS CoV 2)(COVID-19)
- Varicella (chickenpox)
- Zoster (shingles)

The preventive care services listed above are recommendations of the Affordable Care Act (ACA) and are subject to change. They may not be right for every person. Ask your doctor what's right for you.

This sheet is not a contract or policy with Anthem Blue Cross and Blue Shield. If there is any difference between this sheet and the group policy, the group policy provisions will rule. Please see your combined evidence of coverage (EOC) and disclosure form or certificate for exclusions and limitations.

Child preventive care

Preventive physical exams, screenings, and tests:

- Anemia screening
- Anxiety, depression, and suicide risk screenings
- Autism Spectrum Disorder (ASD) screening
- Blood pressure screening
- Cervical dysplasia (abnormal cell growth on the cervix) screening
- Cholesterol and lipid (fat) levels screening
- Development and behavior screening
- Diabetes screening (type 2)
- Hearing screening
- Height, weight, and BMI measurements
- Hemoglobin or hematocrit (blood count) screening
- Hepatitis B screening
- HIV screening
- Lead testing
- Newborn screening
- Obesity: related screening and counseling
- Ocular prophylaxis for Gonococcal Ophthalmia Neonatorum: Preventive medication: newborns
- Oral (dental health) assessment, when done as part of a preventive care visit
- Sexually transmitted infections: related screening and counseling
- Skin cancer counseling for those ages 6 months to 24 years with fair skin
- Sudden cardiac arrest/death risk assessment
- Tobacco, alcohol, and drug use assessments
- Vision screening for those ages 6 months to 5 years



Immunizations:

- Chickenpox
- Flu
- Haemophilus influenzae type B (HIB)
- Hepatitis A and hepatitis B
- Human papillomavirus (HPV)
- Meningitis
- Measles, mumps, and rubella (MMR)
- Pneumonia
- Polio
- Respiratory syncytial virus (RSV)
- Rotavirus
- Severe acute respiratory syndrome coronavirus 2 (SARS CoV 2)(COVID-19)
- Whooping cough

Coverage for pharmacy items

For 100% coverage of your over-the-counter (OTC) drugs and other pharmacy items listed here, you must:

- Meet certain age requirements and other rules
- Receive and fill prescriptions from doctors, pharmacies, or other healthcare professionals in your plan's network
- Have prescriptions, including for OTC items

Women's preventive drugs and other pharmacy items (age appropriate):

- Breast cancer risk-reducing medications, such as tamoxifen, raloxifene, and aromatase inhibitors, that follow the U.S. Preventive Services Task Force criteria²
- Contraceptives, including generic prescription drugs and OTC items like condoms and spermicides^{7,8}
- Folic acid for women ages 55 or younger who are planning to become pregnant
- Low-dose aspirin (81 mg) for pregnant women who have an increased risk of preeclampsia

Adult preventive drugs and other pharmacy items (age appropriate):

- Aspirin use (81 mg and 325 mg) for the prevention of cardiovascular disease (CVD), preeclampsia, and colorectal cancer in adults younger than age 70
- Colonoscopy prep kit (generic or OTC only) when prescribed for preventive colon screening for members ages 45 to 75
- Generic low-to-moderate dose statins for members ages 40 to 75 who have one or more CVD risk factors (dyslipidemia, diabetes, hypertension, or smoking)
- Preexposure prophylaxis (PrEP) for the prevention of HIV
- Tobacco cessation products, including all FDA-approved brand-name and generic OTC and prescription products, for members ages 18 and older

Child preventive drugs and other pharmacy items (age appropriate):

- Dental fluoride varnish to prevent tooth decay in children ages 5 and younger
- Fluoride supplements for children ages 6 and younger

If you'd like more help understanding your preventive care benefits, call the Member Services number on your health plan ID card. For a complete list of covered preventive drugs under the Affordable Care Act, view the Preventive ACA Drug List flyer, available at [anthem.com/pharmacyinformation](https://www.anthem.com/pharmacyinformation).

¹The range of preventive care services covered at no cost share when provided by plan doctors is designed to meet state and federal requirements. The Department of Health and Human Services decided which services to include for full coverage based on U.S. Preventive Services Task Force A and B recommendations, the Advisory Committee on Immunization Practices (ACIP) of the Centers for Disease Control and Prevention (CDC), and certain guidelines for infants, children, adolescents, and women supported by Health Resources and Services Administration (HRSA) guidelines. You may have additional coverage under your insurance policy. To learn more about what your plan covers, see your certificate of coverage or call the Member Services number on your ID card.

²You may be required to receive preapproval for these services.

³The Centers for Disease Control and Prevention (CDC)-recognized diabetes prevention programs are available for overweight or obese adults with abnormal blood glucose or who have abnormal CVD risk factors.

⁴Some plans cover additional vision services. Please see your contract or certificate of coverage for details.

⁵Check your medical policy for details.

⁶Breast pumps and supplies must be purchased from suppliers or retailers in your plan's network for 100% coverage. We recommend using plan durable medical equipment (DME) suppliers.

⁷This benefit also applies to those younger than age 19.

⁸You may pay a share of cost for other prescription contraceptives, based on your drug benefits. Your cost share may be waived if your doctor decides that using the multisource brand or brand name is medically necessary.

^{8/9}Counseling services for breastfeeding (lactation) can be provided or supported by a doctor or facility in your plan's network, such as a pediatrician, OB-GYN, or family medicine doctor, and hospitals with no member cost share (deductible, copay or coinsurance). Contact the provider to see if such services are available.

Anthem Blue Cross and Blue Shield is the trade name of: In Colorado: Rocky Mountain Hospital and Medical Service, Inc. HMO products underwritten by HMO Colorado, Inc. In Connecticut: Anthem Health Plans, Inc. In Indiana: Anthem Insurance Companies, Inc. In Georgia: Blue Cross Blue Shield Healthcare Plan of Georgia, Inc. and Community Care Health Plan of Georgia, Inc. In Kentucky: Anthem Health Plans of Kentucky, Inc. In Maine: Anthem Health Plans of Maine, Inc. In Missouri (excluding 30 counties in the Kansas City area): RightCHOICE® Managed Care, Inc. (RIT), Healthy Alliance® Life Insurance Company (HALIC), and HMO Missouri, Inc. RIT and certain affiliates administer non-HMO benefits underwritten by HALIC and HMO benefits underwritten by HMO Missouri, Inc. RIT and certain affiliates only provide administrative services for self-funded plans and do not underwrite benefits. In Nevada: Rocky Mountain Hospital and Medical Service, Inc. HMO products underwritten by HMO Colorado, Inc., dba HMO Nevada. In New Hampshire: Anthem Health Plans of New Hampshire, Inc. HMO plans are administered by Anthem Health Plans of New Hampshire, Inc. and underwritten by Matthew Thornton Health Plan, Inc. In 17 southeastern counties of New York: Anthem HealthChoice Assurance, Inc., and Anthem HealthChoice HMO, Inc. In these same counties Anthem Blue Cross and Blue Shield HP is the trade name of Anthem HP LLC. In Ohio: Community Insurance Company. In Virginia: Anthem Health Plans of Virginia, Inc. trades as Anthem Blue Cross and Blue Shield, and its affiliate Healthkeepers, Inc. trades as Anthem Healthkeepers providing HMO coverage, and their service area is all of Virginia except for the City of Fairfax, the Town of Vienna, and the area east of State Route 123. In Wisconsin: Blue Cross Blue Shield of Wisconsin (BCBSWI), underwrites or administers PPO and indemnity policies and underwrites the out-of-network benefits in POS policies offered by CompCare Health Services Insurance Corporation (CompCare) or Wisconsin Collaborative Insurance Corporation (WCIC). CompCare underwrites or administers HMO or POS policies; WCIC underwrites or administers Well Priority HMO or POS policies. Independent licensees of the Blue Cross and Blue Shield Association. Anthem is a registered trademark of Anthem Insurance Companies, Inc.



The Sydney Health mobile app makes healthcare easier

Access personalized health and wellness information wherever you are

Use SydneySM Health to keep track of your health and benefits — all in one place. With a few taps, you can quickly access your plan details, Member Services, virtual care, and wellness resources. Sydney Health stays one step ahead — moving your health forward by building a world of wellness around you.

Find Care

Search for doctors, hospitals, and other healthcare professionals in your plan's network and compare costs. You can filter providers by what is most important to you, such as gender, languages spoken, or location. You'll be matched with the best results based on your personal needs.

My Health Dashboard

Use My Health Dashboard to find news on health topics that interest you, health and wellness tips, and personalized action plans that can help you reach your goals. It also offers a customized experience just for you, such as syncing your fitness tracker and scanning and tracking your meals.

Chat

If you have questions about your benefits or need information, Sydney Health can help you quickly find what you're looking for and connect you to an Anthem representative.

Virtual Care

Connect directly to care from the convenience of home. Assess your symptoms quickly using the Symptom Checker or talk to a doctor via chat or video session.

Community Resources

This resource center helps you connect with organizations offering no-cost and reduced-cost programs to help with challenges such as food, transportation, and child care.

My Health Records

See a full picture of your family's health in one secure place. Use a single profile to view, download, and share information such as health histories and electronic medical records directly from your smartphone or computer.



Download the Sydney Health app today

Use the app anytime to:

- Find care and compare costs.
- See what's covered and check claims.
- View and use digital ID cards.
- Check your plan progress.
- Fill prescriptions.



Scan the QR code to download the Sydney Health app.

You can also set up an account at anthem.com/register to access most of the same features from your computer.

In addition to using a telehealth service, you can receive in-person or virtual care from your own doctor or another healthcare professional in your plan's network. If you receive care from a doctor or healthcare professional not in your plan's network, your share of the costs may be higher. You may also receive a bill for any charges not covered by your health plan.

Sydney Health is offered through an arrangement with Cerealon Digital Platforms, a separate company offering mobile application services on behalf of your health plan. ©2020-2022 The Virtual Primary Care experience is offered through an arrangement with Hydrogen Health. Anthem Blue Cross and Blue Shield is the trade name of: In Colorado: Rocky Mountain Hospital and Medical Service, Inc. HMO products underwritten by HMO Colorado, Inc. Copies of Colorado network access plans are available on request from member services or can be obtained by going to anthem.com/co/networkaccess. In Connecticut: Anthem Health Plans, Inc. In Georgia: Blue Cross Blue Shield Healthcare Plan of Georgia, Inc. In Indiana: Anthem Insurance Companies, Inc. In Kentucky: Anthem Health Plans of Kentucky, Inc. In Maine: Anthem Health Plans of Maine, Inc. In Missouri (excluding 30 counties in the Kansas City area): RightCHOICE® Managed Care, Inc. (RIT), Healthy Alliance® Life Insurance Company (HALIC), and HMO Missouri, Inc. RIT and certain affiliates administer non-HMO benefits underwritten by HALIC and HMO benefits underwritten by HMO Missouri, Inc. RIT and certain affiliates only provide administrative services for self-funded plans and do not underwrite benefits. In Nevada: Rocky Mountain Hospital and Medical Service, Inc. HMO products underwritten by HMO Colorado, Inc., dba HMO Nevada. In New Hampshire: Anthem Health Plans of New Hampshire, Inc. HMO plans are administered by Anthem Health Plans of New Hampshire, Inc. and underwritten by Matthew Thornton Health Plan, Inc. In Ohio: Community Insurance Company, Inc. In Virginia: Anthem Health Plans of Virginia, Inc. trades as Anthem Blue Cross and Blue Shield in Virginia, and its service area is all of Virginia except for the City of Fairfax, the Town of Vienna, and the area east of State Route 123. In Wisconsin: Blue Cross Blue Shield of Wisconsin (BCBSWI), underwrites or administers PPO and indemnity policies and underwrites the out of network benefits in POS policies offered by CompCare Health Services Insurance Corporation (CompCare) or Wisconsin Collaborative Insurance Corporation (WCIC). CompCare underwrites or administers HMO or POS policies; WCIC underwrites or administers Well Priority HMO or POS policies. Independent licensees of the Blue Cross and Blue Shield Association. Anthem is a registered trademark of Anthem Insurance Companies, Inc.


Wellbeing Solutions



Focus on your well-being and earn rewards up to \$200

The more activities you complete, the greater your reward

The Wellbeing Solutions program connects you with easy-to-use digital health and wellness tools that can help you stay your best. When you complete any of the activities listed below sponsored by your employer, you'll earn rewards to put toward electronic gift cards for select retailers. You choose the activities you'd like to complete to receive the maximum of \$200.

Activity Type	Activities	Amount
 Preventive care	Have an annual preventive wellness exam or well woman exam with your doctor	\$25
	Get an annual cholesterol test ¹	\$20
	Have a colorectal cancer screening (ages 45 and older)	\$25
	Have a routine mammogram (women ages 40 to 74)	\$25
	Have an annual eye exam ²	\$25
	Get an annual flu shot	\$20



Activity Type	Activities	Amount
 Condition management programs	ConditionCare: Work one on one with your health coach and earn rewards for participating in and completing the program ³	Up to \$50 (\$20/\$30)
	Building Healthy Families: Support is available through the Sydney SM Health app wherever you are in your family planning process, such as trying to conceive or raising your toddler ⁴	Up to \$40 (\$10/\$10/\$10/\$10)
	Well-being Coach – Weight Management: Receive one-on-one coaching by phone as you complete your goal to earn a reward ⁵	\$25
	Well-being Coach – Tobacco Cessation: Receive one-on-one coaching by phone as you complete your goal to earn a reward ⁶	\$25
 Digital & wellness activities	Log in to your Anthem account	\$5
	Connect a fitness or lifestyle device	\$5
	Complete a health assessment and receive tailored health recommendations	\$20
	Complete action plans around eating healthy, weight management, and physical activity	Up to \$25 (\$5 per action plan)
	Track your steps	Up to \$60 (\$2 per 50,000 steps tracked)
	Complete Well-being Coach digital daily check-ins ⁷	Up to \$20 (\$4 per milestone)
	Update your contact information	\$10

Well-being Coach can help you meet your goals

The Well-being Coach digital coaching app offers you 24/7 personalized support. Well-being Coach can help you maintain a healthy weight, quit tobacco, and improve your nutrition, exercise habits, mindfulness, and sleep. If you need extra support with weight management or quitting tobacco, talk to a certified health coach.

Earn rewards

Here's how and when you'll earn rewards for completing the activities already mentioned.

Preventive care: Simply visit your doctor for any of the screenings or appointments listed in the chart. Your rewards are added to your account after your claim is processed, which may take up to 60 days.

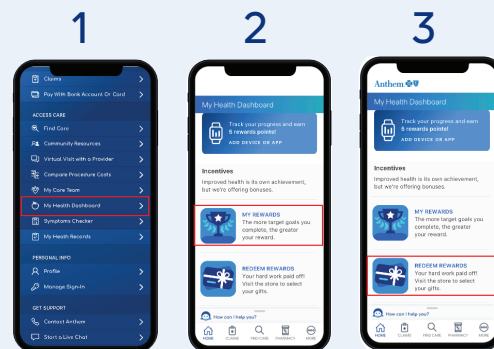
Condition management: Rewards are added to your account as you meet certain benchmarks or complete a program. Programs include: ConditionCare (for asthma, diabetes, and heart or lung conditions), Building Healthy Families, and Well-being Coach for weight management and tobacco cessation.

Digital and wellness activities: Log in to the Sydney Health app or **anthem.com** to complete available activities, such as taking a health assessment, participating in the Well-being Coach digital program, and tracking your steps. Rewards are added to your account as activities are completed.



Use your rewards toward electronic gift cards for select retailers.

- 1 To view your rewards, open the Sydney Health app or go to **anthem.com**. Next, go to *My Health Dashboard*.
- 2 Select **My Rewards**.
- 3 Select **Redeem Rewards** to see how much you've earned. Use your rewards toward electronic gift cards from popular retailers, including Amazon, Uber, Gap Options (all brands), Apple, Target, The Home Depot, and TJ Maxx. The minimum gift card amount is set by each individual retailer.



Download the Sydney Health mobile app by scanning this QR code with your phone's camera.

Do you have questions?

Log in at **anthem.com** or open the Sydney Health app. Then go to *My Health Dashboard* and select **My Rewards** to learn more. You can also call Member Services at the number on your ID card.

1 Annual cholesterol test eligibility: men 35 years and older, women 40 years and older with a full cholesterol (lipid) panel.

2 Annual eye exam reward is available if employer provides vision coverage through **Anthem**.

3 Adult members identified as moderate or high risk are eligible for ConditionCare and may receive a reward for participation in 1 of 5 ConditionCare programs and completion for 1 of 5 ConditionCare programs: (chronic obstructive pulmonary disease [COPD], coronary artery disease [CAD], asthma, diabetes, and congestive heart failure [CHF]. Rewards include: \$20 for program participation and \$30 for program completion.

4 Building Healthy Families milestone completion dates: BHF Pregnancy Screener must be completed in first trimester; at least 1 of 6 mini assessments must be completed by one day prior to delivery; postpartum assessment must be completed by 56 days after delivery. Rewards include: \$10 for profile completion; \$10 for a BHF Pregnancy Screener; \$10 for completing at least 1 of 6 mini assessments; \$10 for a postpartum assessment.

5 Well-being Coach Weight Management program (telephonic) is available for members who are identified as high risk based on a body mass index (BMI) of 30 or higher.

6 Well-being Coach Tobacco Cessation program (telephonic) is available for members who are identified as high risk based on any tobacco usage.

7 Members may earn rewards for completing quarterly Well-being Coach digital milestones while logging daily check-in activities on the app. Daily check-in reward values: first check-in: \$4; next 15 check-ins during first quarter: \$4; 25 check-ins during second through fourth quarters: \$4 each quarter. Log in to Sydney Health or **anthem.com** to download the Well-being Coach digital app. Well-being Coach is provided by Lark Health.

Sydney Health is offered through an arrangement with Carelon Digital Platforms, a separate company offering mobile application services on behalf of your health plan. ©2023

We encourage you to actively participate in your rewards program. Rewards earned should be redeemed before the end of the current plan year. Unused rewards are forfeited three months after the end of your plan year. Make sure to redeem them before then.

All preventive care activities are claims-based, which means your completion is determined when a claim is processed. Medical waivers apply to claim-based activities.

Rewards eligibility applies only to subscribers and their enrolled spouse/domestic partner. Members must be active on the plan and their activity must take place during the plan year. A subscriber and spouse/domestic partner may earn rewards when eligible activities are completed and, in some instances, are verified by an Anthem claim.

The reward amount you receive may be considered income to you and subject to state and federal taxes in the tax year it is paid. You should consult a tax expert with any questions regarding tax obligations.

Electronic gift card availability may vary. The list of retailers available for electronic gift card rewards redemption is subject to change. Log on to **anthem.com** or open the Sydney Health app to explore the electronic gift card options available to you.

Anthem Blue Cross and Blue Shield is the trade name of: In Colorado: Rocky Mountain Hospital and Medical Service, Inc. HMO products underwritten by HMO Colorado, Inc. Copies of Colorado network access plans are available on request from member services or can be obtained by going to **anthem.com/co/networkaccess**. In Connecticut: Anthem Health Plans, Inc. In Georgia: Blue Cross Blue Shield Healthcare Plan of Georgia, Inc. In Indiana: Anthem Insurance Companies, Inc. In Kentucky: Anthem Health Plans of Kentucky, Inc. In Maine: Anthem Health Plans of Maine, Inc. In Missouri (excluding 30 counties in the Kansas City area): RightCHOICE® Managed Care, Inc. (RIT), Healthy Alliance® Life Insurance Company (HALIC), and HMO Missouri, Inc. RIT and certain affiliates administer non-HMO benefits underwritten by HALIC and HMO benefits underwritten by HMO Missouri, Inc. RIT and certain affiliates only provide administrative services for self-funded plans and do not underwrite benefits. In Nevada: Rocky Mountain Hospital and Medical Service, Inc. HMO products underwritten by HMO Colorado, Inc., dba HMO Nevada. In New Hampshire: Anthem Health Plans of New Hampshire, Inc. HMO plans are administered by Anthem Health Plans of New Hampshire, Inc. and underwritten by Matthew Thornton Health Plan, Inc. In Ohio: Community Insurance Company. In Virginia: Anthem Health Plans of Virginia, Inc. trades as Anthem Blue Cross and Blue Shield in Virginia, and its service area is all of Virginia except for the City of Fairfax, the Town of Vienna, and the area east of State Route 123. In Wisconsin: Blue Cross Blue Shield of Wisconsin (BCBSWI), underwrites or administers PPO and indemnity policies and underwrites the out of network benefits in POS policies offered by CompCare Health Services Insurance Corporation (CompCare) or Wisconsin Collaborative Insurance Corporation (WCIC). CompCare underwrites or administers HMO or POS policies; WCIC underwrites or administers Well Priority HMO or POS policies. Independent licensees of the Blue Cross and Blue Shield Association. Anthem is a registered trademark of Anthem Insurance Companies, Inc.



Your Employee Assistance Program website

A resource for finding support, 24/7

Your Employee Assistance Program (EAP) is here to help you and your household members meet life's challenges — big or small. The EAP website houses educational articles, podcasts, online seminars, and other resources to support your work-life balance and emotional health needs. Our offerings include:

Work-life balance

Money, budgeting, and identity theft protection. Learn about credit card debt, loan rates, retirement planning, and financial calculators — or access our discount-shopping program for savings of up to 25%.

Legal services. Consult a professional about small claims court, traffic violations, will creation, and other legal matters.

Parenting tools and insight. Research expert advice on adoption, reducing school anxiety in children, promoting college readiness, raising children with special needs, and becoming a blended family.

Search for care. Your EAP can help you find high-quality child, elder, and pet care.

Healthy lifestyle tips and resources. Receive guidance for improving your eating, fitness, and sleeping habits.

Emotional health and well-being

Stress, anxiety, and depression. Discover new stress relief techniques and connect with behavioral health information, services, and programs.

Addiction and recovery. Explore guidance and support focused on long-term treatment.

Grief and loss. Access emotional health resources, including a digital library of well-being articles and crisis intervention materials.

Emotional Well-being Resources. Your EAP also includes access to a set of digital tools you can use to help improve your emotional well-being.

Extra support. You can schedule a confidential in-person or virtual meeting with a licensed counselor.

EAP wants to help connect you to the right resources.

Please visit anthemEAP.com and log in by entering Anthem Missouri. There, you can:

- Look at this month's special features.
- Search by topic.

You can also talk to us directly by calling 800-999-7222.



Anthem Blue Cross and Blue Shield is the trade name of: In Colorado: Rocky Mountain Hospital and Medical Service, Inc. HMO products underwritten by HMO Colorado, Inc. Copies of Colorado network access plans are available on request from member services or can be obtained by going to anthem.com/co/networkaccess. In Connecticut: Anthem Health Plans, Inc. In Georgia: Blue Cross Blue Shield Healthcare Plan of Georgia, Inc. In Indiana: Anthem Insurance Companies, Inc. In Kentucky: Anthem Health Plans of Kentucky, Inc. In Maine: Anthem Health Plans of Maine, Inc. In Missouri (excluding 30 counties in the Kansas City area): RightCHOICE® Managed Care, Inc. (RIT), Healthy Alliance® Life Insurance Company (HALIC), and HMO Missouri, Inc. RIT and certain affiliates administer non-HMO benefits underwritten by HALIC and HMO benefits underwritten by HMO Missouri, Inc. RIT and certain affiliates only provide administrative services for self-funded plans and do not underwrite benefits. In Nevada: Rocky Mountain Hospital and Medical Service, Inc. HMO products underwritten by HMO Colorado, Inc. dba HMO Nevada. In New Hampshire: Anthem Health Plans of New Hampshire, Inc. HMO plans are administered by Anthem Health Plans of New Hampshire, Inc. and underwritten by Matthew Thornton Health Plan, Inc. In Ohio: Community Insurance Company. In Virginia: Anthem Health Plans of Virginia, Inc. trades as Anthem Blue Cross and Blue Shield in Virginia, and its service area is all of Virginia except for the City of Fairfax, the Town of Vienna, and the area east of State Route 123. In Wisconsin: Blue Cross Blue Shield of Wisconsin (BCBSWI), underwrites or administers PPO and indemnity policies and underwrites the out of network benefits in POS policies offered by CompCare Health Services Insurance Corporation (CompCare) or Wisconsin Collaborative Insurance Corporation (WCIC). CompCare underwrites or administers HMO or POS policies; WCIC underwrites or administers Well Priority HMO or POS policies. Indemnity licensees of the Blue Cross and Blue Shield Association. Anthem is a registered trademark of Anthem Insurance Companies, Inc.



Expanding your virtual care options

Find complete care support, on your time, through the **Sydney Health app**

Visit with a doctor at your convenience

Accessing the care you need, when you need it, matters. That's why our SydneySM Health mobile app connects you to a team of doctors ready to help you on your time. There are two secure ways to find low or no-additional cost care through our app:

- 1 **Chat with a doctor 24/7 without an appointment**
 - Urgent care support for health issues, such as allergies, a cold, or the flu.
 - New prescriptions¹ for concerns such as a cough or a sinus infection.
- 2 **Schedule a virtual primary care appointment**
 - Routine care, including virtual annual preventive care (wellness) visit and prescription refills.^{1,2,3,4}
 - Personalized care plans for chronic conditions, such as asthma or diabetes.

Assess your symptoms with the Symptom Checker

When you're sick, you can use the Symptom Checker on Sydney Health to answer a few questions about how you're feeling. That information is run against millions of medical data points to provide care advice tailored to you.

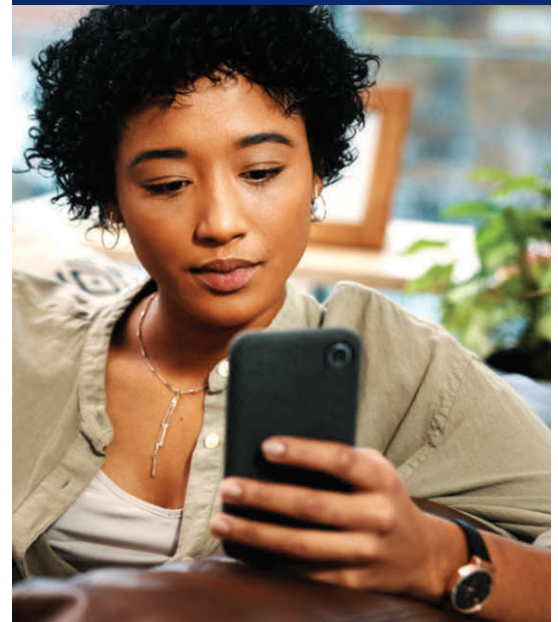
Save money and time with virtual care

Sydney Health brings care to you anywhere, anytime. The Symptom Checker is always free to use, while virtual primary care visits and on-demand urgent care through the app are available at low or no-additional cost.

▶ Download our Sydney Health mobile app today.



Set up your account right away and it will be ready to use when you need it.



85% of virtual visits resolve the person's need.⁵

1 Virtual annual preventive care (wellness) visits through the Sydney Health app are available starting September 2022. The virtual annual preventive care (wellness) visit is covered in full unless the employer has a limit or cap under their benefit plan.
 2 Virtual primary care medical services provided by Preventive Medical Associates P.C. through an arrangement with Hydrogen Health, which provides the virtual care platform.
 3 Eligible employees are those who have not yet had an annual preventive care (wellness) visit during the plan year (either virtual or in-person) whose group benefit plan covers a virtual primary care exam. If an employer group has a cap on the number of preventive care (wellness) visits that are covered in full and the employee has exceeded the cap but would like to have another preventive care (wellness) visit, they may be responsible for copays and other out-of-pocket costs for the visit. Employees should consult their benefit plan and/or contact Member Services if they have any questions.
 4 Your doctor will determine if a prescription is needed at time of visit.
 5 K Health analysis of Q4 2020 visit depositions.
 Sydney Health is offered through an arrangement with Carelon Digital Platforms, a separate company offering mobile application services on behalf of your health plan. ©2020-2022 The Virtual Primary Care experience is offered through an arrangement with Hydrogen Health. In addition to using a telehealth service, you can receive in-person or virtual care from your own doctor or another healthcare professional in your plan's network. If you receive care from a doctor or healthcare professional not in your plan's network, your share of the costs may be higher. You may also receive a bill for any charges not covered by your health plan.
 Anthem Blue Cross and Blue Shield is the trade name of: In Colorado: Rocky Mountain Hospital and Medical Service, Inc. HMO products underwritten by HMO Colorado, Inc. In Connecticut: Anthem Health Plans, Inc. In Georgia: Blue Cross Blue Shield Healthcare Plan of Georgia, Inc. In Indiana: Anthem Insurance Companies, Inc. In Kentucky: Anthem Health Plans of Kentucky, Inc. In Maine: Anthem Health Plans of Maine, Inc. In Missouri (excluding 30 counties in the Kansas City area): RightCHOICESM Managed Care, Inc. (RIT), Healthy AllianceSM Life Insurance Company (HALIC), and HMO Missouri, Inc. RIT and certain affiliates administer non-HMO benefits underwritten by HALIC and HMO benefits underwritten by HMO Missouri, Inc. RIT and certain affiliates only provide administrative services for self-funded plans and do not underwrite benefits. In Nevada: Rocky Mountain Hospital and Medical Service, Inc. HMO products underwritten by HMO Colorado, Inc. dba HMO Nevada. In New Hampshire: Anthem Health Plans of New Hampshire, Inc. HMO plans are administered by Anthem Health Plans of New Hampshire, Inc. and underwritten by Matthew Thornton Health Plan, Inc. In Ohio: Community Insurance Company. In Virginia: Anthem Health Plans of Virginia, Inc. trades as Anthem Blue Cross and Blue Shield in Virginia, and its service area is all of Virginia except for the City of Fairfax, the Town of Vienna, and the area east of State Route 123. In Wisconsin: Blue Cross Blue Shield of Wisconsin (BCBSWI), underwrites or administers PPO and indemnity policies and underwrites the out of network benefits in POS policies offered by CompCare Health Services Insurance Corporation (CompCare) or Wisconsin Collaborative Insurance Corporation (WCIC). CompCare underwrites or administers HMO or POS policies; WCIC underwrites or administers Well Priority HMO or POS policies. Independent licensees of the Blue Cross Blue Shield Association. Anthem is a registered trademark of Anthem Insurance Companies, Inc.
 4579509MUMENABS VP00 By Rev. 06/22

See a doctor on your phone, tablet or computer, 24/7

Using LiveHealth Online, you can have a private video visit from home or on the go.

When you need care, LiveHealth Online is ready to help. No need to make an appointment. Just log in at livehealthonline.com or use the app, and see a board-certified doctor in a few minutes.

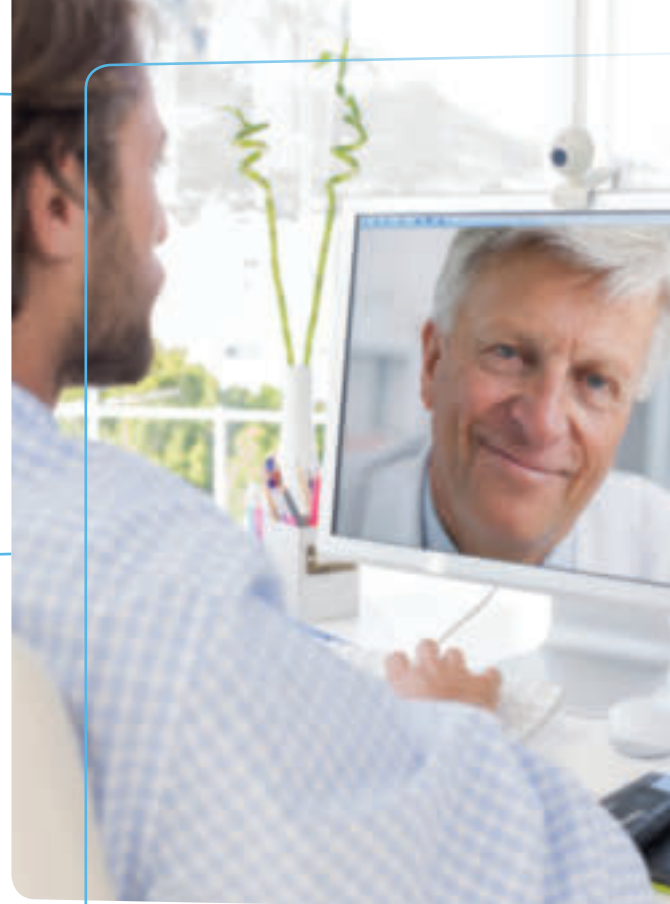
When your own doctor isn't available, use LiveHealth Online if you have:

- Pinkeye
- A cold
- The flu
- A fever
- Allergies
- A sinus infection
- And more

A doctor can assess your condition, provide a treatment plan and even send a prescription to your pharmacy, if it's needed.*

What will a visit cost?

Your Anthem plan includes benefits for video visits using LiveHealth Online, so you'll just pay your share of the costs — usually \$59 or less.



Sign up for LiveHealth Online today – it's quick and easy

Go to livehealthonline.com or download the app and register on your phone or tablet.



LiveHealth Online is the trade name of Health Management Corporation, a separate company providing telehealth services on behalf of Anthem Blue Cross and Blue Shield. 60019ANMENABS_M_VP00 06/17

* Prescription availability is defined by physician judgment and state regulations. Visit the home page of livehealthonline.com to view the service map by state.

If you're a retiree or have coverage that complements your Medicare benefits, your employer sponsored health plan may not include coverage for online visits using LiveHealth Online. Check your plan documents for details. You can still use LiveHealth Online, but you may have to pay the full cost of a visit. Online visits using LiveHealth Online may not be a covered benefit for HRA and HIA+ members.

Anthem Blue Cross and Blue Shield is the trade name of: In Colorado: Rocky Mountain Hospital and Medical Service, Inc. HMO products underwritten by HMO Colorado, Inc. Copies of Colorado network access plans are available on request from member services or can be obtained by going to anthem.com/co/networkaccess. In Connecticut: Anthem Health Plans, Inc. In Georgia: Blue Cross Blue Shield Healthcare Plan of Georgia, Inc. In Indiana: Anthem Insurance Companies, Inc. In Kentucky: Anthem Health Plans of Kentucky, Inc. In Maine: Anthem Health Plans of Maine, Inc. In Missouri (excluding 30 counties in the Kansas City area): RightCHOICE® Managed Care, Inc. (RIT), Healthy Alliance® Life Insurance Company (HALIC), and HMO Missouri, Inc. RIT and certain affiliates administer non-HMO benefits underwritten by HALIC and HMO benefits underwritten by HMO Missouri, Inc. RIT and certain affiliates only provide administrative services for self-funded plans and do not underwrite benefits. In Nevada: Rocky Mountain Hospital and Medical Service, Inc. HMO products underwritten by HMO Colorado, Inc., dba HMO Nevada. In New Hampshire: Anthem Health Plans of New Hampshire, Inc. HMO plans are administered by Anthem Health Plans of New Hampshire, Inc. and underwritten by Matthew Thornton Health Plan, Inc. In Ohio: Community Insurance Company. In Virginia: Anthem Health Plans of Virginia, Inc. trades as Anthem Blue Cross and Blue Shield in Virginia, and its service area is all of Virginia except for the City of Fairfax, the Town of Vienna, and the area east of State Route 123. In Wisconsin: Blue Cross Blue Shield of Wisconsin (BCBSWI), underwrites or administers PPO and indemnity policies and underwrites the out of network benefits in POS policies offered by Compare Health Services Insurance Corporation (Compare) or Wisconsin Collaborative Insurance Corporation (WCIC). Compare underwrites or administers HMO or POS policies; WCIC underwrites or administers Well Priority HMO or POS policies. Independent licensees of the Blue Cross and Blue Shield Association. Anthem is a registered trademark of Anthem Insurance Companies, Inc.



Discover your options for quick care

Find out about emergency room alternatives

When you're looking for care in a hurry, you want to receive it safely and quickly. If it's not a life-threatening emergency and your doctor isn't available, you have other options.

What to do when you need care fast



Step 1: Call your primary care doctor or Anthem's 24/7 NurseLine.

Your doctor can help you decide where to receive care, whether it's a visit to the office, the emergency room (ER), or somewhere else. If your doctor isn't available, you can call the Anthem 24/7 NurseLine at the number on the back of your ID card for guidance.



Step 2: If it's not an emergency, choose one of the options below to save time and money.

Depending on your needs, the following options are more convenient than the ER, and you can use them at night and on weekends to lower your chances of long wait times:

- **LiveHealth Online** — Have a video visit in minutes with a board-certified doctor 24/7 on your mobile device or computer. No appointment is needed. Go to livehealthonline.com or download the no-cost app to register.
- **Retail health clinic** — Typically located in a major pharmacy or retail store, you can receive basic health care services from a health care professional.
- **Walk-in doctor's office** — No appointment is needed for routine care and common illnesses.
- **Urgent care center** — For conditions that need care right away, urgent care is a convenient option if you need stitches, lab tests, or X-rays.

If you're an HMO member, talk to your primary care doctor to understand your options for quick care. Your doctor can also help you find quick care centers in your plan.

When you think it's a true emergency, call 911 or go to the nearest ER.



Prescriptions made easier

Your health is in your hands

Your prescription drug coverage is important to your health. With pharmacy benefits from Anthem, powered by CarelonRx, you can track and manage all of your prescriptions in one convenient place. Refill and renew prescriptions, find a pharmacy, and check the cost of medications.

To get started, log in to anthem.com, go to My Plans, and then go to Pharmacy. You can also use the SydneySM Health mobile app.

All of your prescription information in one place

Think of this as a digital version of your medicine cabinet at home. It provides real-time information about your prescriptions, including dosage, days' supply, and the last fill date. You can view your prescription history, check the number of refills left, and request to switch eligible prescriptions to CarelonRx Mail.

No-hassle refills and renewals

Refills and renewals are at your fingertips when you choose CarelonRx Mail. You can turn on automatic refills and renewals, check order status, get notices when your order ships or if something needs your attention, and manage your payments and account balance.



Find ways to save

When you need prescriptions, you can check prices before you get them. See if a generic drug will save you money or if home delivery makes more sense than getting prescriptions at your retail pharmacy. We'll help you understand your options so you can make informed choices for you and your family. You can also save on your prescriptions with available refill pharmacy coupons.

Choose how to stay in touch

When it's time for a refill or when you're due for a health screening, you decide if you'd like us to reach you through a call, email, or text. Opt in or out of alerts and set your payment preferences too.

Log in to anthem.com or download the Sydney Health app to find out how to get the most from your benefit plan.

CarelonRx, Inc. is an independent company providing pharmacy benefit management services on behalf of your health plan.

Sydney Health is offered through an arrangement with Carelon Digital Platforms, a separate company offering mobile application services on behalf of your health plan. ©2020-2022.

Anthem Blue Cross and Blue Shield is the trade name of: In Colorado: Rocky Mountain Hospital and Medical Service, Inc. HMO products underwritten by HMO Colorado, Inc. In Connecticut: Anthem Health Plans, Inc. In Georgia: Blue Cross Blue Shield Healthcare Plan of Georgia, Inc. In Indiana: Anthem Insurance Companies, Inc. In Kentucky: Anthem Health Plans of Kentucky, Inc. In Maine: Anthem Health Plans of Maine, Inc. In Missouri (excluding 30 counties in the Kansas City area): RightCHOICE[®] Managed Care, Inc. (RIT), Healthy Alliance[®] Life Insurance Company (HALIC), and HMO Missouri, Inc. RIT and certain affiliates administer non-HMO benefits underwritten by HALIC and HMO benefits underwritten by HMO Missouri, Inc. RIT and certain affiliates only provide administrative services for self-funded plans and do not underwrite benefits. In Nevada: Rocky Mountain Hospital and Medical Service, Inc. HMO products underwritten by HMO Colorado, Inc., dba HMO Nevada. In New Hampshire: Anthem Health Plans of New Hampshire, Inc. HMO plans are administered by Anthem Health Plans of New Hampshire, Inc. and underwritten by Matthew Thornton Health Plan, Inc. In Ohio: Community Insurance Company. In Virginia: Anthem Health Plans of Virginia, Inc. trades as Anthem Blue Cross and Blue Shield in Virginia, and its service area is all of Virginia except for the City of Fairfax, the Town of Vienna, and the area east of State Route 123. In Wisconsin: Blue Cross Blue Shield of Wisconsin (BCBSWI), underwrites or administers PPO and indemnity policies and underwrites the out of network benefits in POS policies offered by CompCare Health Services Insurance Corporation (CompCare) or Wisconsin Collaborative Insurance Corporation (WCIC). CompCare underwrites or administers HMO or POS policies; WCIC underwrites or administers Well Priority HMO or POS policies. Independent licensees of the Blue Cross Blue Shield Association. Anthem is a registered trademark of Anthem Insurance Companies, Inc.

WHAT CAN YOU DO IN A MINUTE?



HERE'S HOW

- 1 Visit www.anthem.com/findadoctor**
 1. Scroll down the page to **Search as a Guest** and click on **Search by Selecting Medical (Employer-Sponsored)**
 2. Use the dropdown menu to select **Medical** as the type of care you are searching for
 3. Select the **state** you are in from the drop down menu
 4. Select your plan/network from drop down menu:
 - › In Missouri, under **Medical Networks**, select the
 - **Blue Access Choice Option OR Blue Preferred Option**
 - Outside of Missouri select **National PPO (BlueCard PPO)**
 5. Click **Continue**
 6. Enter additional search criteria to narrow your search

- 2 When you select a doctor (or other provider) in your results list, you'll find out more about:**

- › Training
- › Languages spoken
- › Phone number
- › Satisfaction and quality information
- › Specialties
- › Address and map



NOT AT HOME? GO MOBILE!

Anthem makes it easy for you to find a doctor, hospital and more on your mobile device. Just download our free Sydney app from the App Store® or Google Play™.

**SIMPLE SOLUTIONS
THAT MAKE
HEALTHCARE EASIER...
SO YOU CAN SAVE
TIME AND MONEY.**

In Missouri, (excluding 30 counties in the Kansas City area) Anthem Blue Cross and Blue Shield is the trade name of RightCHOICE® Managed Care, Inc. (RIT), Healthy Alliance® Life Insurance Company (HALIC), and HMO Missouri, Inc. RIT and certain affiliates administer non-HMO benefits underwritten by HALIC and HMO benefits underwritten by HMO Missouri, Inc. RIT and certain affiliates only provide administrative services for self-funded plans and do not underwrite benefits. Independent licensees of the Blue Cross and Blue Shield Association. © ANTHEM is a registered trademark of Anthem Insurance Companies, Inc. The Blue Cross and Blue Shield names and symbols are registered marks of the Blue Cross and Blue Shield Association.

Save money with SpecialOffers and discounts

As part of your health plan, you qualify for discounts on products and services that help promote better health and well-being. These discounts are available through SpecialOffers to help you save money while taking care of your health.



Dental, hearing, and vision

Dental

ProClear™ Aligners

You can improve your smile without metal braces and dental visits. These clear, teeth-straightening aligners, which you buy online, are an excellent lower-cost option to the regular wire braces or aligner treatments you receive through an orthodontist.

RefreshaDent

Save on premium dentures from the comfort of your home with a lifetime warranty.

Hearing

NationsHearing®

Receive hearing screenings and in-home service at no additional cost. You can also receive hearing aids at a discounted rate.

Hearing Care Solutions

Receive no-cost hearing exams and discounts on hearing aids. Hearing Care Solutions has 3,100 locations and eight manufacturers, and offers a three-year warranty, batteries for two years, and unlimited visits for one year.

Amplifon

Save on top-quality care and ongoing service and support for your hearing aids.

Eyewear

Glasses.com® and 1-800 CONTACTS®

Shop for the latest brand-name frames at a fraction of the cost for similar frames at other retailers. You can also receive additional savings on orders of \$100 or more, plus no-cost shipping and returns.

EyeMed

Take advantage of discounts on new glasses, nonprescription sunglasses, and eyewear accessories.

LASIK

Premier LASIK Network

Save on LASIK when you choose any featured Premier LASIK Network provider.

TruVision

Save on LASIK eye surgery at over 1,000 locations.



Health and fitness

Health

BREVENA

Enjoy a discount on BREVENA skin care creams and balms for smooth, rejuvenated skin from head to toe.

ChooseHealthy®

Discounts are available on acupuncture, chiropractic, massage, podiatry, physical therapy, and nutritional services. You also have discounts on fitness equipment, wearable trackers, and health products such as vitamins and nutrition bars.

Jenny Craig®

Receive everything you need to make it easier to reach your health goals. In addition to no-cost coaching, you can also save on food purchases.

LifeMart®

Deals on beauty and skin care, diet plans, fitness club memberships and plans, personal care, spa services, yoga classes, sports gear, and vision care.

Fitness

Active&Fit Direct™

Choose from more than 11,900 participating fitness centers nationwide at a discounted rate. This program is offered through American Specialty Health Fitness, Inc.

Fitbit®

Work toward your fitness goals with Fitbit trackers and smartwatches that go with your lifestyle and budget.

Garmin®

Discounts are available on select Garmin wellness devices.

GlobalFit®

Discounts are available for gym memberships, fitness equipment, coaching, and other services.

Family and home

Family

WINFertility®

Save up to 40% on infertility treatment. WINFertility helps make quality treatment more affordable.

Safe Beginnings®

Babyproof your home while saving on everything from safety gates to outlet covers.

23andMe®

Save on health and ancestry kits to learn about your wellness, ancestry, and more.

Home

Nationwide® pet insurance

Receive discounts when you enroll through your company or organization. Additional savings are available when you enroll multiple pets.

ASPCA® Pet Health Insurance

Find reduced rates on pet insurance and choose from three levels of care, including flexible deductibles and custom reimbursements.

Medicine and treatment

Medicine

Puritan's Pride®

Choose from a large selection of discounted vitamins, minerals, and supplements.

Allergy Control Products and National Allergy Supply™

Save on select doctor-recommended products such as allergy-friendly bedding, air purifiers and filters, and asthma products. Some orders qualify for no-cost ground shipping within the contiguous U.S.

Treatment

The Living Well Course Series

Choose one of the online living programs and save on coaching to help you lose weight, stop smoking, manage stress or diabetes, restore sound sleep, or face an alcohol problem.

▶ **Learn more about SpecialOffers**
Log in to [anthem.com](https://www.anthem.com), choose **Care**, and select **Discounts**.

Anthem Blue Cross and Blue Shield is the trade name of: In Colorado: Rocky Mountain Hospital and Medical Service, Inc. HMO products underwritten by HMO Colorado, Inc. Copies of Colorado network access plans are available on request from member services or can be obtained by going to [anthem.com/co/networkaccess](https://www.anthem.com/co/networkaccess). In Connecticut: Anthem Health Plans, Inc. In Georgia: Blue Cross Blue Shield Healthcare Plan of Georgia, Inc. In Indiana: Anthem Insurance Companies, Inc. In Kentucky: Anthem Health Plans of Kentucky, Inc. In Maine: Anthem Health Plans of Maine, Inc. In Missouri (excluding 30 counties in the Kansas City area): RightCHOICE® Managed Care, Inc. (RIT), Healthy Alliance® Life Insurance Company (HALIC), and HMO Missouri, Inc. RIT and certain affiliates administer non-HMO benefits underwritten by HALIC and HMO benefits underwritten by HMO Missouri, Inc. RIT and certain affiliates only provide administrative services for self-funded plans and do not underwrite benefits. In Nevada: Rocky Mountain Hospital and Medical Service, Inc. HMO products underwritten by HMO Colorado, Inc., dba HMO Nevada. In New Hampshire: Anthem Health Plans of New Hampshire, Inc. HMO plans are administered by Anthem Health Plans of New Hampshire, Inc. and underwritten by Matthew Thornton Health Plan, Inc. In Ohio: Community Insurance Company. In Virginia: Anthem Health Plans of Virginia, Inc. trades as Anthem Blue Cross and Blue Shield in Virginia, and its service area is all of Virginia except for the City of Fairfax, the Town of Vienna, and the area east of State Route 123. In Wisconsin: Blue Cross Blue Shield of Wisconsin (BCBSWI), underwrites or administers PPO and indemnity policies and underwrites the out of network benefits in POS policies offered by CompCare Health Services Insurance Corporation (CompCare) or Wisconsin Collaborative Insurance Corporation (WCIC). CompCare underwrites or administers HMO or POS policies; WCIC underwrites or administers Well Priority HMO or POS policies. Independent licensees of the Blue Cross and Blue Shield Association. Anthem is a registered trademark of Anthem Insurance Companies, Inc.

Protecting your privacy

How we keep your information safe and secure

As a member, you have the right to expect us to protect your personal health information. We take this responsibility very seriously, following all state and federal laws, as well as our own policies.

You also have certain rights and responsibilities when receiving your healthcare. To understand how we protect your privacy, rights, and responsibilities when receiving healthcare, and your rights under the Women's Health and Cancer Rights Act, go to [anthem.com/privacy](https://www.anthem.com/privacy). For a printed copy, please contact your benefits administrator or Human Resources representative.

How we help manage your care

To see if your health benefits will cover a treatment, procedure, hospital stay, or medicine, we use a process called utilization management (UM). Our UM team is made up of doctors and pharmacists who want to be sure you receive the best treatments for certain health conditions. They review the information your doctor sends us before, during, or after your treatment. We also use case managers. They're licensed healthcare professionals who work with you and your doctor to help you manage your health conditions. They also help you better understand your health benefits.

For additional information about how we help manage your care, go to [anthem.com/memberrights](https://www.anthem.com/memberrights). To request a printed copy, please contact your benefits administrator or Human Resources representative.

Special enrollment rights

Open enrollment usually happens once a year. That's the time you can choose a plan, enroll in it, or make changes to it. If you choose not to enroll, there are special cases when you're allowed to enroll during other times of the year:

- **If you had another health plan that was canceled.** If you, your dependents, or your spouse are no longer eligible for benefits with another health plan (or if the employer stops contributing to that health plan), you may be able to enroll with us. You must enroll within 31 days after the other health plan ends (or after the

employer stops paying for the plan). For example: You and your family are enrolled through your spouse's health plan at work. Your spouse's employer stops paying for health coverage. In this case, you and your spouse, as well as other dependents, may be able to enroll in one of our plans.

- **If you have a new dependent.** You gain new dependents from a life event, such as marriage, birth, adoption, or if you have custody of a minor and an adoption is pending. You must enroll within 31 days after the event. For example: If you marry, your new spouse and any new children may be able to enroll in a plan.
- **If your eligibility for Medicaid or SCHIP changes.** You have a special period of 60 days to enroll after:
 - You (or your eligible dependents) lose Medicaid or the State Children's Health Insurance Program (SCHIP) benefits because you're no longer eligible.
 - You (or your eligible dependents) become eligible to receive help from Medicaid or SCHIP for paying part of the cost of a health plan with us.

We're here for you – in many languages

The law requires us to include a message in all of these different languages. Curious what they say? Here's the English version: "You have the right to get help in your language for free. Just call the Member Services number on your ID card." Visually impaired? You can also ask for other formats of this document.

Spanish

Usted tiene derecho a recibir ayuda en su idioma en forma gratuita. Simplemente llame al número de Servicios para Miembros que figura en su tarjeta de identificación.

Chinese

您有權免費獲得透過您使用的語言提供的幫助。請撥打您的ID 卡片上的會員服務電話號碼。若您是視障人士，還可索取本文件的其他格式版本。

Vietnamese

Quý vị có quyền nhận miễn phí trợ giúp bằng ngôn ngữ của mình. Chỉ cần gọi số Dịch vụ dành cho thành viên trên thẻ ID của quý vị. Bị khiếm thị? Quý vị cũng có thể hỏi xin định dạng khác của tài liệu này."

Korean

귀하는 자국어로 무료 지원을 받을 권리가 있습니다. ID 카드에 있는 멤버 서비스번호로 연락하십시오.

Tagalog

May karapatan ka na makakuha ng tulong sa iyong wika nang libre. Tawagan lamang ang numero ng Member Services sa iyong ID card. May kapansanan ka ba sa paningin? Maaari ka ring humiling ng iba pang format ng dokumentong ito.

Russian

Вы имеете право на получение бесплатной помощи на вашем языке. Просто позвоните по номеру обслуживания клиентов, указанному на вашей идентификационной карте. Пациенты с нарушением зрения могут заказать документ в другом формате.

Armenian

Դուք իրավունք ունեւ ստանալ անվար օգնություն ձեր լեզվով: Պարզապես զանգահարեք Անդամների սպասարկման կենտրոն, որի հեռախոսահամարը նշված է ձեր ID քարտի վրա:

Farsi

“شما این حق را دارید تا به صورت رایگان به زبان مادری تان کمک دریافت کنید. کافی است با شماره خدمات اعضا (Member Services) درج شده روی کارت شناسایی خود تماس بگیرید.” “دچار اختلال بینایی هستید؟ می توانید این سند را به فرمت های دیگری نیز درخواست دهید.”

French

Vous pouvez obtenir gratuitement de l'aide dans votre langue. Il vous suffit d'appeler le numéro réservé aux membres qui figure sur votre carte d'identification. Si vous êtes malvoyant, vous pouvez également demander à obtenir ce document sous d'autres formats.

Arabic

لك الحق في الحصول على مساعدة بلغتك مجاناً. ما عليك سوى الاتصال برقم خدمة الأعضاء الموجود على بطاقة الهوية. هل أنت ضعيف البصر؟ يمكنك طلب أشكال أخرى من هذا المستند.

Japanese

お客様の言語で無償サポートを受けることができます。IDカードに記載されているメンバーサービス番号までご連絡ください。

Haitian

Se dwa ou pou w jwenn èd nan lang ou gratis. Annik rele nimewo Sèvis Manm ki sou kat ID ou a. Èske ou gen pwoblèm pou wè? Ou ka mande dokiman sa a nan lòt fòm tou.

Italian

Ricevere assistenza nella tua lingua è un tuo diritto. Chiama il numero dei Servizi per i membri riportato sul tuo tesserino. Sei ipovedente? È possibile richiedere questo documento anche in formati diversi.

Polish

Masz prawo do uzyskania darmowej pomocy udzielonej w Twoim języku. Wystarczy zadzwonić na numer działu pomocy znajdujący się na Twojej karcie identyfikacyjnej.

Punjabi

ਆਪਣੀ ਭਾਸ਼ਾ ਵਿੱਚ ਮੁਫਤ ਵਿੱਚ ਮਦਦ ਹਾਸਲ ਕਰਨ ਦਾ ਅਧਿਕਾਰ ਹੈ। ਬਸ ਆਪਣੇ ਆਈਡੀ ਕਾਰਡ ਤੇ ਦਿੱਤੇ ਸਰਵਿਸ ਨੰਬਰ ਤੇ ਕਾਲ ਕਰੋ। ਨਜ਼ਰ ਕਮਜ਼ੋਰ ਹੈ? ਤੁਸ ਇਸ ਦਸਤਾਵੇਜ਼ ਦੇ ਹੋਰ ਰੂਪਾਂਤਰ ਮੰਗ ਸਕਦੇ ਹੋ।

TTY/TTD:711

It's important we treat you fairly

We follow federal civil rights laws in our health programs and activities. By calling Member Services, our members can get free in-language support, and free aids and services if you have a disability. We don't discriminate, exclude people, or treat them differently on the basis of race, color, national origin, sex, age or disability. For people whose primary language isn't English, we offer free language assistance services through interpreters and other written languages. Interested in these services? Call the Member Services number on your ID card for help (TTY/TDD: 711). If you think we failed in any of these areas, you can mail a complaint to: Compliance Coordinator, P.O. Box 27401, Mail Drop VA2002-N160, Richmond, VA 23279, or directly to the U.S. Department of Health and Human Services, Office for Civil Rights at 200 Independence Avenue, SW; Room 509F, HHH Building; Washington, D.C. 20201. You can also call 1-800- 368-1019 (TDD: 1-800-537-7697) or visit

<https://ocrportal.hhs.gov/ocr/portal/lobby.jsf>



Your benefits administrator or Human Resources representative will contact you with step-by-step instructions on how to enroll in your Anthem health plan.



Sydney Health is offered through an arrangement with Caredon Digital Platforms, a separate company offering mobile application services on behalf of your health plan.

In addition to using a telehealth service, you can receive in-person or virtual care from your own doctor or another healthcare provider in your plan's network. If you receive care from a doctor or healthcare provider not in your plan's network, your share of the costs may be higher. You may also receive a bill for any charges not covered by your health plan.

Virtual text and video visits powered by K Health. LiveHealth Online is offered through an arrangement with Amwell, a separate company, providing telehealth services on behalf of your health plan.

Anthem Blue Cross and Blue Shield is the trade name of: In Colorado: Rocky Mountain Hospital and Medical Service, Inc. HMO products underwritten by HMO Colorado, Inc. In Connecticut: Anthem Health Plans, Inc. In Indiana: Anthem Insurance Companies, Inc. In Georgia: Blue Cross Blue Shield Healthcare Plan of Georgia, Inc. and Community Care Health Plan of Georgia, Inc. In Kentucky: Anthem Health Plans of Kentucky, Inc. In Maine: Anthem Health Plans of Maine, Inc. In Missouri (excluding 30 counties in the Kansas City area): RightCHOICE® Managed Care, Inc. (RIT), Healthy Alliance® Life Insurance Company (HALIC), and HMO Missouri, Inc. RIT and certain affiliates administer non-HMO benefits underwritten by HALIC and HMO benefits underwritten by HMO Missouri, Inc. RIT and certain affiliates only provide administrative services for self-funded plans and do not underwrite benefits. In Nevada: Rocky Mountain Hospital and Medical Service, Inc. HMO products underwritten by HMO Colorado, Inc., dba HMO Nevada. In New Hampshire: Anthem Health Plans of New Hampshire, Inc. HMO plans are administered by Anthem Health Plans of New Hampshire, Inc. and underwritten by Matthew Thornton Health Plan, Inc. In 17 southeastern counties of New York: Anthem HealthChoice Assurance, Inc. and Anthem HealthChoice HMO, Inc. In these same counties Anthem Blue Cross and Blue Shield HP is the trade name of Anthem HP, LLC. In Ohio: Community Insurance Company. In Virginia: Anthem Health Plans of Virginia, Inc. trades as Anthem Blue Cross and Blue Shield, and its affiliate Healthkeepers, Inc. trades as Anthem Healthkeepers providing HMO coverage, and their service area is all of Virginia except for the City of Fairfax, the Town of Vienna, and the area east of State Route 123. In Wisconsin: Blue Cross Blue Shield of Wisconsin (BCBSW) underwrites or administers PPO and indemnity policies and underwrites the out-of-network benefits in POS policies offered by CompCare Health Services Insurance Corporation. CompCare underwrites or administers HMO or POS policies. Independent licensees of the Blue Cross and Blue Shield Association. Anthem is a registered trademark of Anthem Insurance Companies, Inc.